



DC PLUGS & JACKS

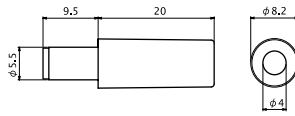
PLUG TYPE 5.5 × 2.1 & 5.5 × 2.5

No. **MP-121M**

5.5 × 2.1 DC PLUG (DC12V 0.5A)

No. **MP-122M**

5.5 × 2.5 DC PLUG (DC12V 1A)

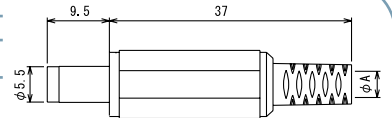


No. **MP-121C**

5.5 × 2.1 DC PLUG (DC12V 0.5A)

No. **MP-122C**

5.5 × 2.5 DC PLUG (DC12V 1A)



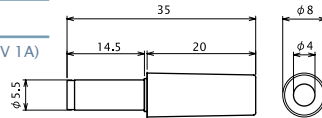
ϕA	$\phi 4$	MP-121C	MP-122C
	$\phi 5$	MP-121C/5	MP-122C/5

No. **MP-136**

5.5 × 2.1 LONG TYPE DC PLUG (DC12V 0.5A)

No. **MP-137**

5.5 × 2.5 LONG TYPE DC PLUG (DC12V 1A)

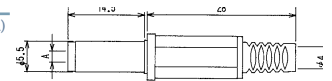


No. **MP-136H**

5.5 × 2.1 LONG TYPE DC PLUG (DC12V 0.5A)

No. **MP-137H**

5.5 × 2.5 LONG TYPE DC PLUG (DC12V 1A)

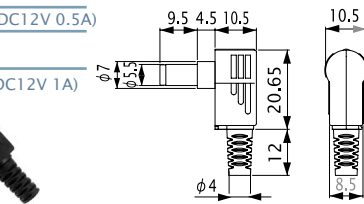


No. **MP-136LN**

5.5 × 2.1 RIGHT ANGLE DC PLUG (DC12V 0.5A)

No. **MP-137LN**

5.5 × 2.5 RIGHT ANGLE DC PLUG (DC12V 1A)



No. **MC-2374**

5.5 × 2.1 DC PLUG (DC12V 0.5A)

No. **MC-2375**

5.5 × 2.5 DC PLUG (DC12V 1A)



DC ADAPTOR CABLE L=1800mm

No. **MJ-179P**

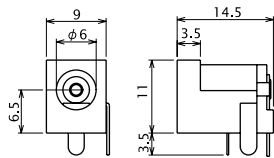
PLUG TYPE: 5.5 × 2.1 (DC12V 0.5A)

No. **MJ-180P**

PLUG TYPE: 5.5 × 2.5 (DC12V 1A)



DC JACK FOR P.C.B.



No. **MC-2374L**

5.5 × 2.1 DC PLUG (DC12V 0.5A)

No. **MC-2375L**

5.5 × 2.5 DC PLUG (DC12V 1A)



RIGHT ANGLE DC ADAPTOR CABLE L=1800mm

No. **MJ-179SMT**

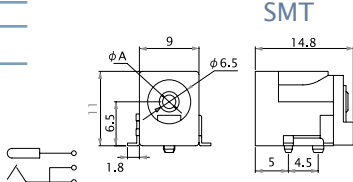
PLUG TYPE: 5.5 × 2.1 (DC12V 0.5A)

No. **MJ-180SMT**

PLUG TYPE: 5.5 × 2.5 (DC12V 1A)



DC JACK FOR P.C.B. SMT



No. **MJ-196P**

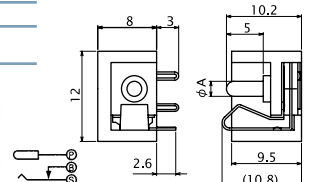
PLUG TYPE: 5.5 × 2.1 (DC12V 0.5A)

No. **MJ-197P**

PLUG TYPE: 5.5 × 2.5 (DC12V 1A)



DC JACK FOR P.C.B.



No. **MJ-179LE**

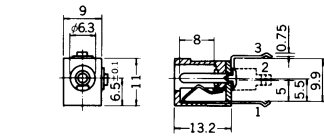
PLUG TYPE: 5.5 × 2.1 (DC12V 0.5A)

No. **MJ-180LE**

PLUG TYPE: 5.5 × 2.5 (DC12V 1A)



DC JACK FOR P.C.B.

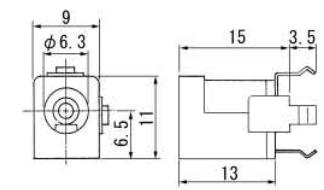


No. **MJ-292DJ**

PLUG TYPE: 5.5 × 2.1 (DC12V 0.5A)



DC JACK FOR P.C.B.

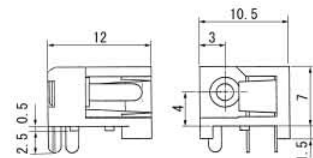


No. **MJ-272DJ**

PLUG TYPE: 5.5 × 2.1 (DC12V 0.5A)



DC JACK FOR P.C.B.



No. **MJ-10**

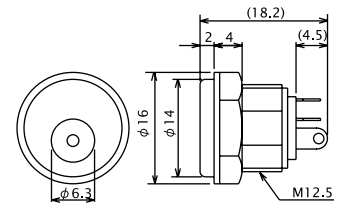
PLUG TYPE: 5.5 × 2.1 (DC12V 0.5A)

No. **MJ-11**

PLUG TYPE: 5.5 × 2.5 (DC12V 1A)



PANEL MOUNT DC JACK



No. **MJ-14**

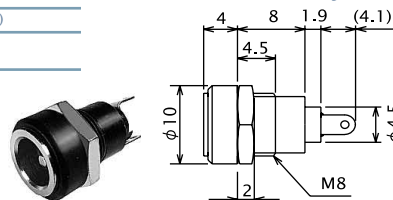
PLUG TYPE: 5.5 × 2.1 (DC12V 0.5A)

No. **MJ-15**

PLUG TYPE: 5.5 × 2.5 (DC12V 1A)



SNAP-IN MOUNT DC JACK



No. **MJ-60**

PLUG TYPE: 5.5 × 2.1 (DC12V 0.5A)

No. **MJ-61**

PLUG TYPE: 5.5 × 2.5 (DC12V 1A)



SNAP-IN MOUNT DC JACK

