

LEDs for Bar Graphic Display

■ LEDs for Bar Graphic Display Line-up

Type	Number of dots	Outline dimensions (Top view) (mm)	Radiation shape per dot (mm)	Radiation color				Multiple colors*1				Outline dimensions (Fig.)
				Single color								
				R (P)	G	N	H	S	M	F	T	
Case mold				Red	Green	Yellow-green	Yellow	Yellow-green+Red			Yellow-green+Yellow+Red	
12	7.0×58.0	1.5×4.0	GL112R9	GL112G9	GL112N9	GL112H9	GL112S9 (9dots+3dots)	GL112M9 (8dots+4dots)	GL112F9 (7dots+5dots)	GL112T9 (4dots+4dots+4dots)	1	
	7.0×70.4	2.2×5.3	GL112R13	GL112G13	GL112N13	GL112H13	GL112S13 (9dots+3dots)	GL112M13 (8dots+4dots)	GL112F13 (7dots+5dots)	GL112T13 (4dots+4dots+4dots)	2	
7	6.0×42.0	2.0×4.5	GL107R12	GL107G12	GL107N12	GL107H12	GL107S12 (5dots+2dots)	GL107M12 (4dots+3dots)			3	

*1 Composition chart of LEDs for bar graphic display

Type	Model No.	Colors											
		A	B	C	D	E	F	G	H	I	J	K	L
Case mold	GL112S9	□	□	□	□	□	□	□	□	□	■	■	■
	GL112M9	□	□	□	□	□	□	□	□	■	■	■	■
	GL112F9	□	□	□	□	□	□	□	■	■	■	■	■
	GL112T9	□	□	□	□	▨	▨	▨	▨	■	■	■	■
	GL112S13	□	□	□	□	□	□	□	□	□	■	■	■
	GL112M13	□	□	□	□	□	□	□	□	■	■	■	■
	GL112F13	□	□	□	□	□	□	□	■	■	■	■	■
	GL112T13	□	□	□	□	▨	▨	▨	▨	■	■	■	■
	GL107S12	□	□	□	□	□	■	■					
	GL107M12	□	□	□	□	■	■	■					

■ Absolute Maximum Ratings

(Ta=25°C)

Radiation color	Type	Power dissipation P (mW)	Continuous forward current I _F (mA)	Peak forward current* I _{FM} (mA)	Derating factor		Reverse voltage V _R (V)	Operating temperature Topr (°C)	Storage temperature Tstg (°C)
					DC (mA/°C)	Pulse (mA/°C)			
Red	Case mold	25	10	50	0.18	0.91	5	-20~+70	-30~+80
	All-resin	23	10	50	0.13	0.67	5	-25~+85	-25~+100
Yellow	Case mold	50	20	50	0.36	0.91	5	-20~+70	-30~+80
	All-resin	84	30	50	0.40	0.67	5	-25~+85	-25~+100
Yellow-green	Case mold	38	15	50	0.27	0.91	5	-20~+70	-30~+80
	All-resin	84	30	50	0.40	0.67	5	-25~+85	-25~+100
Green	Case mold	38	15	50	0.27	0.91	5	-20~+70	-30~+80

* Duty ratio 1/10, Pulse width 0.1ms

■ Electro-optical Characteristics

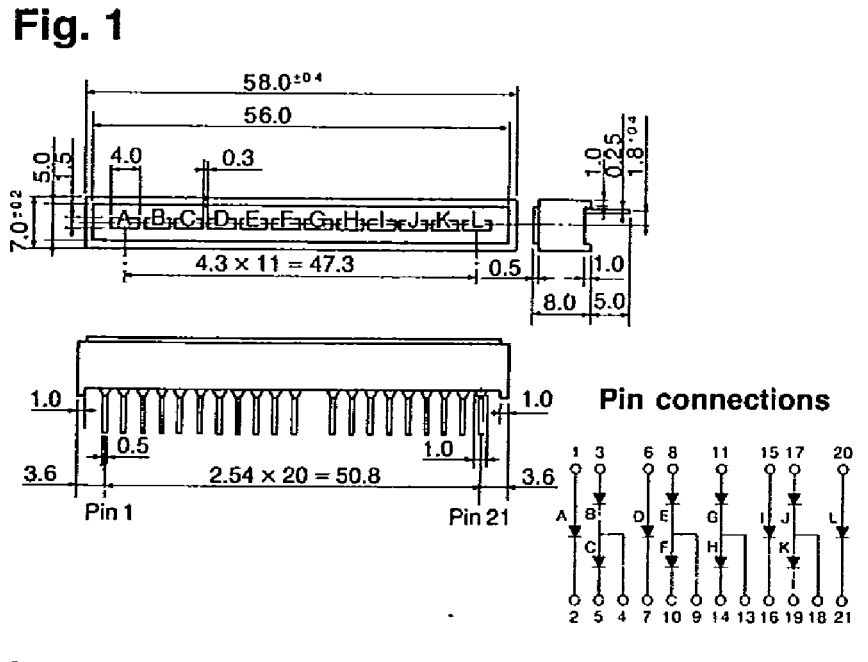
(Ta=25°C)

Radiation color	Type	Forward voltage V _F (V)		Luminous intensity I _v (mcd)		Peak emission wavelength λ _p (nm)	Spectrum radiation bandwidth Δλ (nm)	Condition I _F (mA)	Reverse current I _R (μA)	Condition V _R (V)
		TYP	MAX	MIN	TYP	TYP	TYP		MAX	
Red	Case mold	1.9	2.5	0.15	0.3	695	100	5	10	4
	All-resin	1.9	2.3	0.3	0.9	695	100	5	10	4
Yellow	Case mold	1.9	2.5	0.2	0.5	585	30	10	10	4
	All-resin	2.0	2.8	1.5	5.0	585	30	20	10	4
Yellow-green	Case mold	2.0	2.5	0.2	0.5	565	30	10	10	4
	All-resin	2.1	2.8	0.6	1.4	565	30	20	10	4
Green	Case mold	2.0	2.5	0.08	0.15	555	25	10	10	4

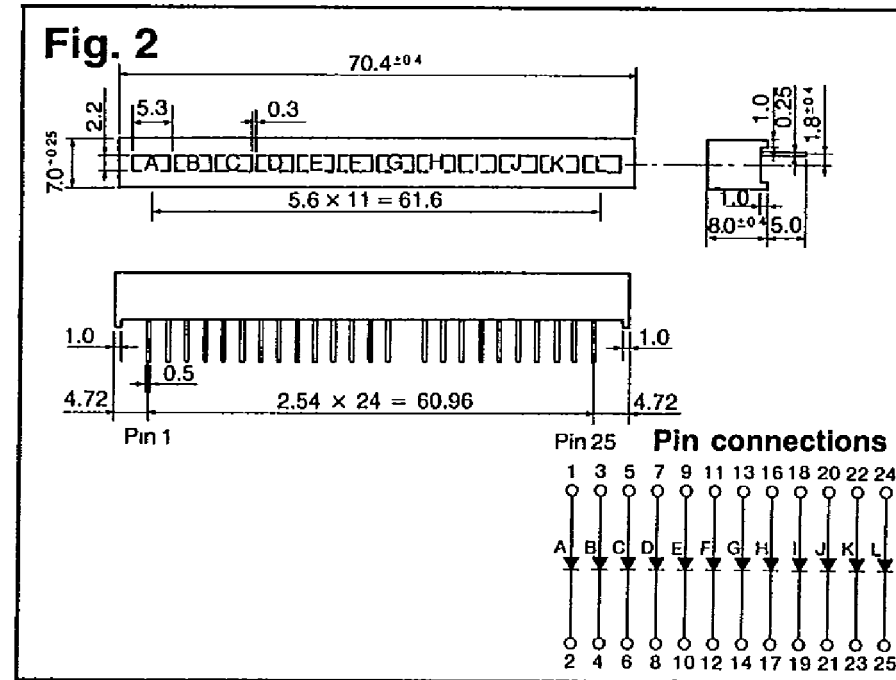
■ Outline Dimensions

(Unit: mm)

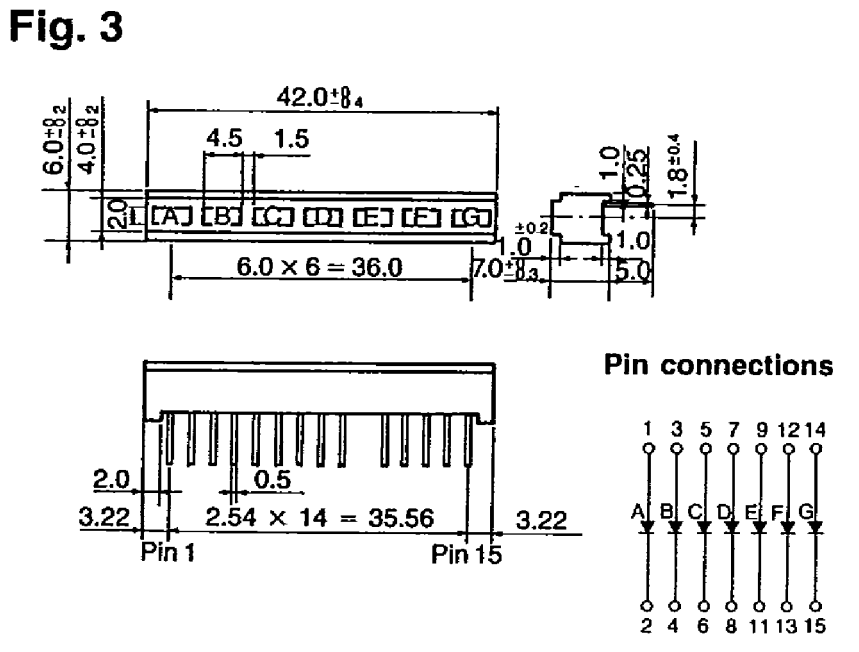
Note) □ indicates radiation color symbol



GL112□9 series



GL112□13 series



GL107□12 series