

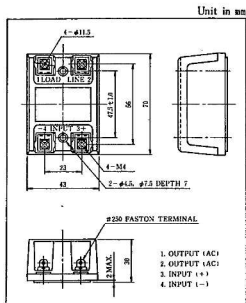
(ZERO-CROSS TYPE)

TSS16G41S

400V 16A

MAXIMUM RATINGS

CHARACTERISTIC		SYMBOL	SNMBOL	UNIT
Output	Repetitive Peak Off-state Voltage	TSS16D41S	200	V
		TSS16G41S	400	
		TSS16H41S	500	
		TSS16J41S	600	
RMS On-state Current		IT(RMS)	16	A
Peak On State Surge Current (One Repetitive)		ITSM	165(60Hz) 150(50Hz)	A
Operating Frequency Range		f	45-65	Hz
Control Input Voltage (DC)		VFINO	6	V
Control Input Current (DC)		IFINO	20	mA
Input	Input Resistance	TSS16D41S	300(Typical)	Ω
		TSS16G41S		
		TSS16J41S		
Input/output	Isolation (t = 1 min.)	AC	BVs/AC	V
	Input to Output	DC	BVs/DC	2000
Operating Temperature Range		Top	-30 ~ 80	°C
Storage Temperature Range		Tstg	-30 ~ 80	°C



ELECTRICAL CHARACTERISTICS

CHARACTERISTIC		SYMBOL	CONDITION	MIN	TYP	MAX	UNIT
Input	Pick Up Voltage	VFT	VDR = 100Vrms	-	-	4.5	V
	Pick Up Current	IFT		-	-	8	mA
	Drop Out Voltage	VFD		1	-	-	V
	Drop Out Current	IFD		1	-	-	mA
Off-state Leakage Current		IDR	VDR = Rated (DC Voltage)	-	-	10	mA
Output	Peak On-state Voltage	VFM	ITM = 25A	-	-	1.4	V
	Peak Turn-on Voltage	VON	VW(RMS) = 100Vrms	-	-	7	V
	DC Holding Current	IH	RL = 100Ω	-	-	50	mA
	dv/dt (Off-state)	dv/dt	VDRM = 0.7 Rated	50	-	-	V/μs
	dv/dt (Commutating)	dv/dt (c)	VDRM = 0.7 Rated IT = 16A	2	-	-	V/μs
	Input/output	Turn-on Time	ton	VW(RMS) = 100Vrms	-	-	1/3
Turn-off Time		toff	-	-	-	1/2	Cycle
Isolation Resistance		Ra	V = 1kV, Ru = 40 ~ 60%	-	10 ⁹	-	Ω

CHARACTERISTIC CURVES

