

TYPICAL SWITCH ORDERING EXAMPLE

DR **F** **R** **10** **P**

| ACTUATORS | |
|--------------------|---|
| PCB Mount | |
| F | Screwdriver Actuated with White Dot Indicator |
| F2 | Screwdriver Actuated with Arrow Indicator |
| K | Shaft Actuated |
| S | Dial Actuated (for straight terminals only) |
| Panel or PCB Mount | |
| A | Knob Actuated |

| POSITIONS | |
|-----------|-------------|
| 10 | Decimal |
| 16 | Hexadecimal |

| PC TERMINALS | |
|--------------|-------------|
| P | Straight |
| H | Right Angle |

| BRACKETS | |
|----------------|---|
| No Code | No Bracket (supplied w/standard hardware) |
| B | With Bracket (order hardware separately) |

CIRCUITS

| | |
|----------|--|
| R | Real Coded (Orange Actuator) |
| C | Complement Coded (White on F2 actuator & Red on all other actuators) |

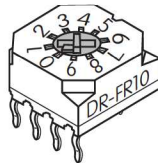
DESCRIPTION FOR TYPICAL ORDERING EXAMPLE
DRFR10P

- Screwdriver Actuated
- Decimal Actuator Positions
- Real Code
- Straight PC Terminals

ACTUATORS

F Screwdriver Actuated with White Dot Indicator

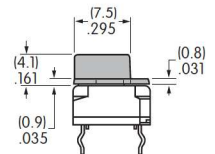
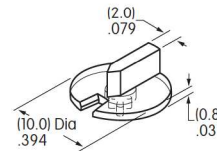
Adjusted with a flat or Phillips tipped screwdriver or Snap-in Knob AT4061.



AT4061 Optional Snap-in Knob for "F" Actuator

Polyamide

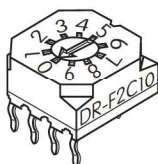
Black knob with clear flange



Install knob before mounting on PCB for right angle type; it should not be removed once mounted. When mounting, align slit in knob with white pointer on actuator.

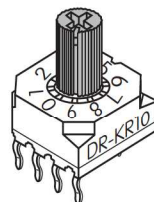
F2 Screwdriver Actuated with Arrow Indicator

Adjusted with a flat tipped screwdriver.



K Shaft Actuated

Adjusted by hand or with a flat or Phillips tipped screwdriver.



S Dial Actuated

Adjusted by hand or with a flat tipped screwdriver.



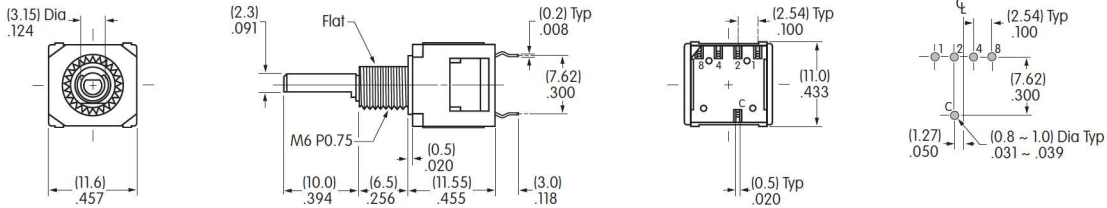
Actuators are fully rotational and operate either clockwise or counterclockwise.

Actuator Colors: Orange for real coded devices. Red for complement coded devices, except arrow actuated (F2) which is white.

TYPICAL SWITCH DIMENSIONS

Straight PC Terminals • Panel Mount

P



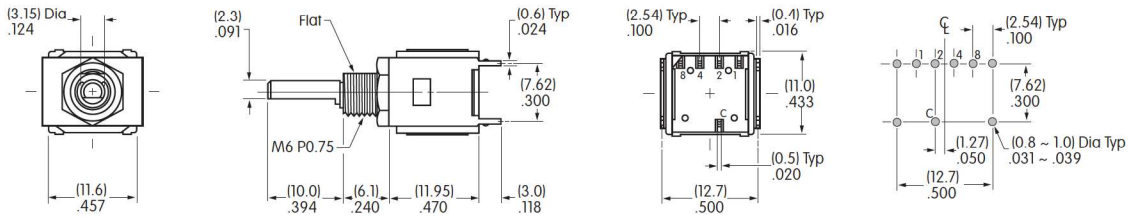
Shown in Position 0 with shaft flat rotated 180° from bushing flat.

DRAR10P

(Hardware is not supplied with bracketed models.)

Straight PC Terminals • With Bracket

PB

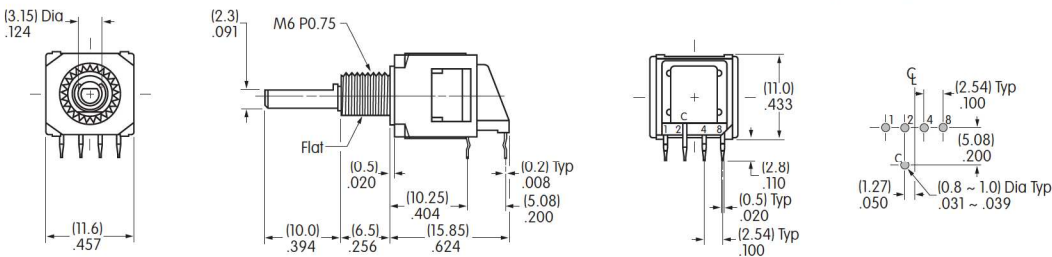


Shown in Position 0 with shaft flat rotated 180° from bushing flat.

DRAR10PB

Right Angle PC Terminals • Panel Mount

H



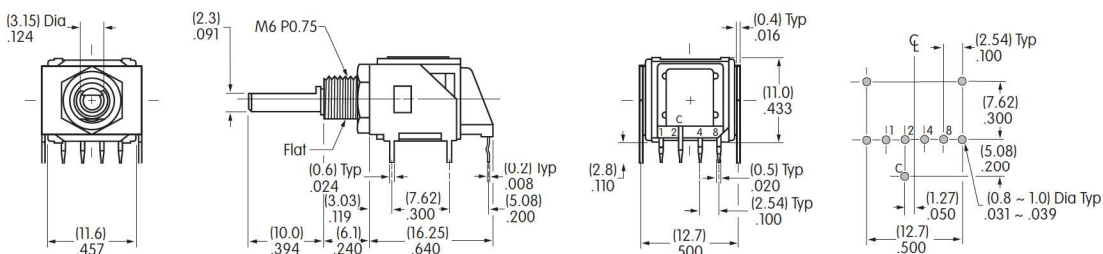
Shown in Position 0 with shaft flat rotated 180° from bushing flat.

DRAR10H

(Hardware is not supplied with bracketed models.)

Right Angle PC Terminals • With Bracket

HB



Shown in Position 0 with shaft flat rotated 180° from bushing flat.

DRAR10HB