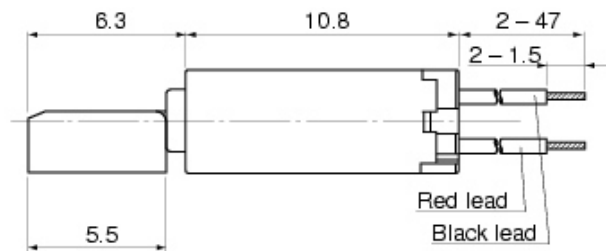
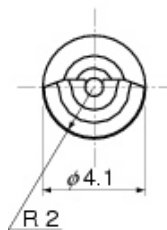


COPAL LA4 Series 4mm Vibration Motors

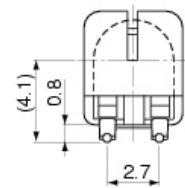
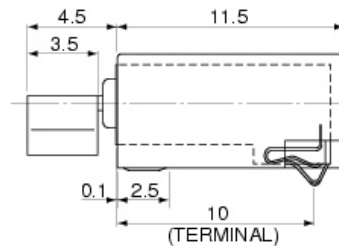
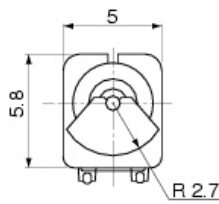
- Low noise and power consumption
- Optional holders and rubber boots.
- Minimum cogging
- 1.3 or 3.0Vdc available

Model Number	Rated Voltage (Vdc)	Rated Speed Min (rpm)	Rated Current (mA)	Starting Voltage (Vdc)	Accel Force (G)	Overall Length (mm)	Motor Length (mm)
LA4-424A	1.3	9,500	75	0.60	0.76	16.3	10.8
LA4-424C	3.0	11,000	66	1.40	1.00	17.1	10.8
LA4-432	1.3	8,200	90	0.80	0.85	15.3	10.8
LA4-432A	3.0	9,500	66	1.40	1.10	15.3	10.8
LA4-436A	1.3	9,800	135	0.80	0.73	11.8	8
LA4-436	3.0	11,500	95	1.80	0.94	11.8	8

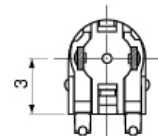
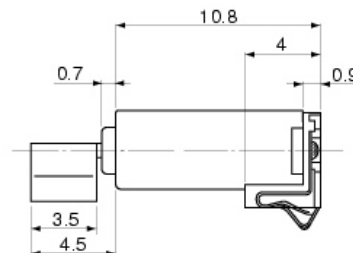
LA4-424



LA4-432

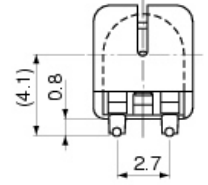
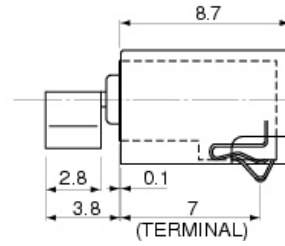
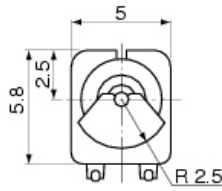


Spring contacts and rubber boot

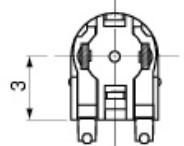
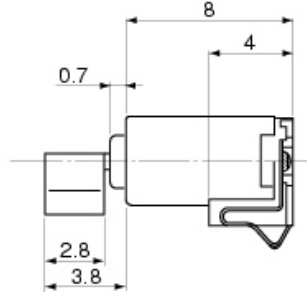
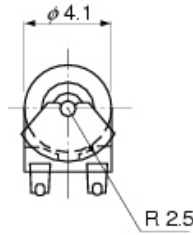


Spring contacts

LA4-436



Spring contacts and rubber boot



Spring contacts

For assistance with your application contact:

NIDEC COPAL GmbH

Charlotten Str. 51, 40210 Duesseldorf, Germany

Phone: 49-211-550-469-0

Fax: 49-211-550-469-29

URL <http://www.nidec-copal.de/>