

DC Power Jacks (for Type A Mate Plug)

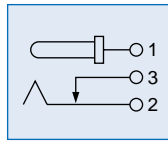
Unit: mm

Lead Wire Terminal (Screw)

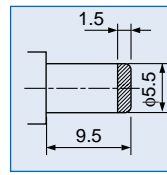


HEC0757-010030

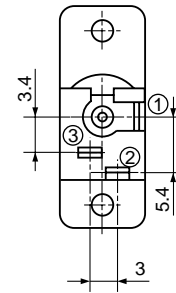
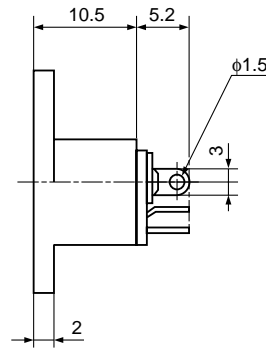
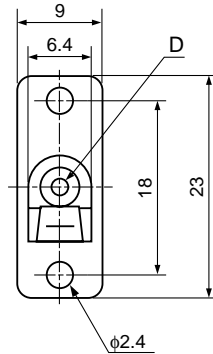
Rating: 12 V DC 1 A



Schematic 1



Mate Plug A



Dimension D	$\phi 2$
Model No.	HEC0757-010030

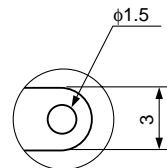
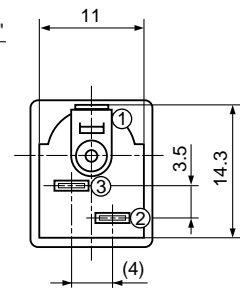
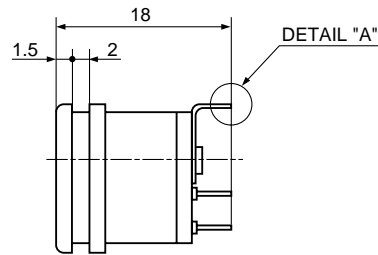
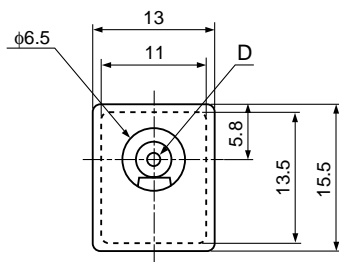
*Schematic 1
*Mate Plug A

Lead Wire Terminal (Screw)



HEC0749-01-010

Rating: 12 V DC 1 A



DETAIL "A"

Dimension D Letter	$\phi 2$	$\phi 2.35$
Fig. 1	HEC0749-01-010	HEC0749-01-020
Fig. 2	HEC0749-01-330	HEC0749-01-340
Fig. 3	HEC0749-01-370	HEC0749-01-380
Fig. 4	HEC0749-01-410	HEC0749-01-420
Fig. 5	HEC0749-01-450	HEC0749-01-460
Fig. 6	HEC0749-01-490	HEC0749-01-500

*Schematic 1
*Mate Plug A