

**1S2471**  
**1S2472**  
**1S2473**

**Diode, switching, leaded**

These diodes are in a glass sealed envelope and are suitable for lead mounting on printed circuit boards. They have a high switching speed. (The reverse recovery time ( $t_{rr}$ ) is typically 1.5 ns.)

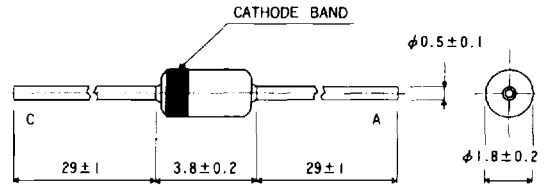
**Features**

- available in DO-35 package
- part marking, see following table

**Applications**

- high speed switching

**Dimensions (Units : mm)**



**Cathode band color**

Part no.	Color
1S2471	Black
1S2472	Green
1S2473	Yellow

**Absolute maximum ratings ( $T_a = 25^\circ\text{C}$ )**

Parameter	Symbol	Limits	Unit	Parameter	Symbol	Limits	Unit
Peak reverse voltage	1S2471	90	V	Surge current (1 s)	1S2471	600	mA
	1S2472	55			1S2472	500	
	1S2473	40			1S2473	400	
DC reverse voltage	1S2471	80	V	Power dissipation	1S2471	300	mW
	1S2472	50			1S2472	300	
	1S2473	35			1S2473	300	
Peak forward current	1S2471	400	mA	Junction temperature	1S2471	175	$^\circ\text{C}$
	1S2472	350			1S2472	175	
	1S2473	300			1S2473	175	
Mean rectifying current	1S2471	130	mA	Storage temperature	1S2471	-65 ~ +175	$^\circ\text{C}$
	1S2472	120			1S2472		
	1S2473	110			1S2473		

Electrical characteristics (unless otherwise noted,  $T_a = 25^\circ\text{C}$ )

Parameter		Symbol	Min	Typical	Max	Unit	Conditions
Forward voltage	1S2471	$V_F$		0.92	1.2	V	$I_F = 100\text{ mA}$
	1S2472			0.92	1.2		
	1S2473			0.92	1.2		
Reverse current	1S2471	$I_R$		0.020	0.5	$\mu\text{A}$	$V_R = 80\text{ V}$
	1S2472			0.012	0.5		$V_R = 50\text{ V}$
	1S2473			0.010	0.5		$V_R = 35\text{ V}$
Capacitance between terminals	1S2471	$C_t$		1.55	2	pF	$V_R = 0.5, f = 1\text{ MHz}$
	1S2472			1.55	2		
	1S2473			1.50	3		
Reverse recovery time	1S2471	$t_{rr}$		1.5	4	ns	$V_R = 6\text{ V}, I_F = 10\text{ mA}$
	1S2472			1.5	4		
	1S2473			1.5	4		

Electrical characteristic curves

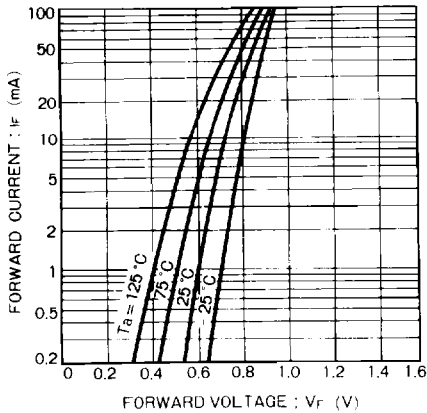


Figure 1

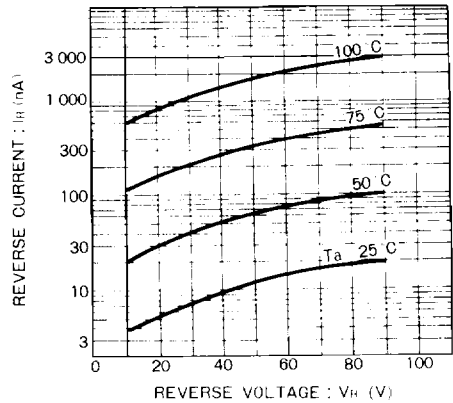


Figure 2

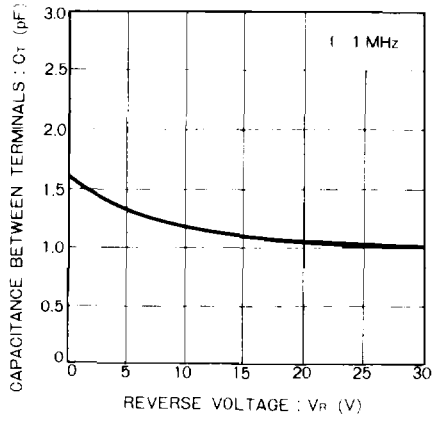


Figure 3

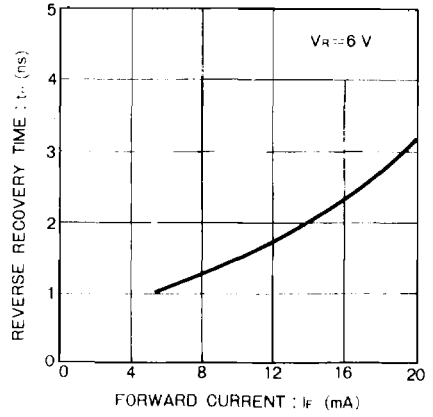


Figure 4

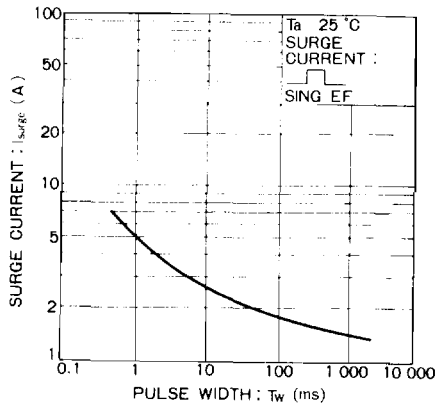
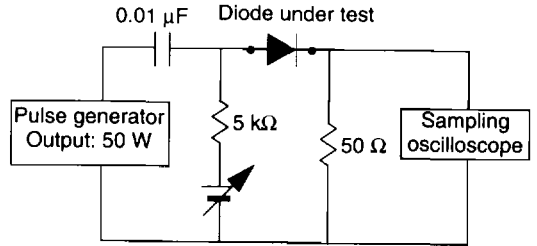


Figure 5



Test circuit for measuring reverse recovery time ( $t_{rr}$ )

Figure 6